

Installation Instruction Cool-Matic NV 40

We like to wish you lots of fun while and with installing your new Cool-Matic NV 40-Cooler. To be able to assist with a problem-free installation we would like to ask you to please read the following instructions aswell as carefully follow them **EXACTLY** !

**Please turn all Power to the PC off and disconnect power support before installing !!
If unclear or unsure you should either have it installed by a trained professional or seek such assistance. To avoid any damages caused by cooling fluid you must check your entire cooling system for any leaks prior.**

Content:

Here you will find a summary of the individual paragraphs from this manual:

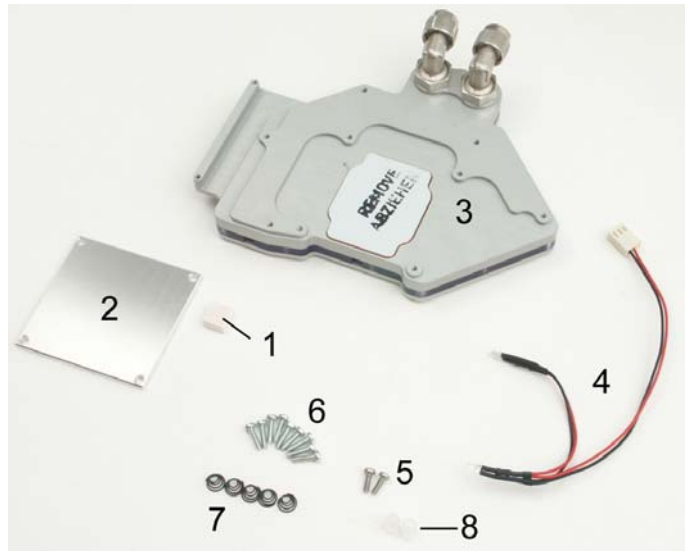
- 1.) Shipping contents
- 2.) Preparations
- 3.) Dismounting the original Cooler
- 4.) Installing the Cool-Matic NV 40
- 5.) General Information and proper usage
- 6.) Extra Accessories
- 7.) Support

1.) Shipping contents

Cool-Matic NV 40 including:

- 1- 1x Presspad
- 2- 1x Backplate
- 3- 1x Cooler
(optional edition with lightband)
- 4- 1x Lighting-LEDs (Option)
- 5- 2x Screws M2,5 (short) with washer
- 6- 9x Screws M2,5 (long)
- 7- 5x Springs
- 8- 2x Shells for LED

Not in the picture: Heat conductive paste and this manual.



2.) Preparations

Please accomplish the mounting on a ESD surface (for Example: on the inside of the mainboard foil). Electricly unload yourself before mounting, e.g. at a grounded computer housing. Please consider while uninstalling and handling the appropriate caution measures to avoid electrostatic damage !

As tools you need a Phillips-head screwdriver.

Caution !! The Cooler can be only installed onto Graphic Cards using NV40 GPU (256MB RAM) with/and Nvidia reference design (see picture).



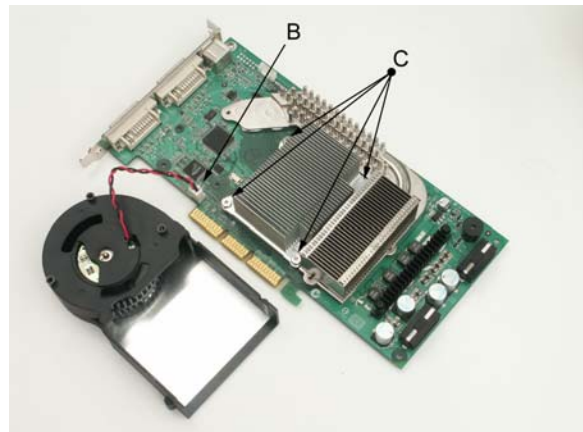
3.) Dismounting the original Cooler

!!! Please follow all the upcoming steps regarding mounting and dismounting very precisely and carefully !!!

A – As the first step please dismount the three screws of the fan as shown marked „A“ on the picture.

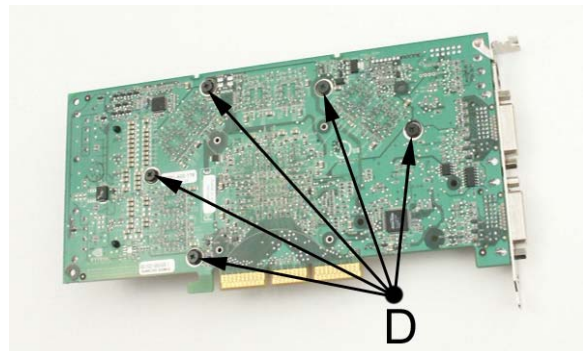


B – The Fan can now be dismounted by pulling the fan-plug „B“ off the Graphic Card – The connector plug has a locking mechanism and will come off a little harder therefor.



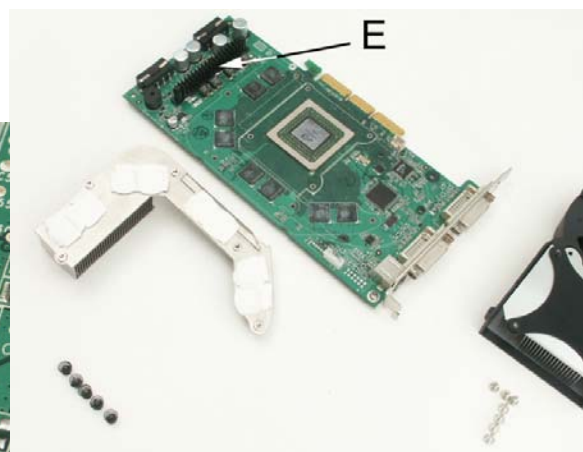
C – Next is to loosen the screws holding the GPU Cooler step by step.
Important : Loosen screws „cross-wise“. Follow this loosening method by turning the screws approx. a half turn each before moving to the next screw. Repeat until loose.

D – Next is the dismounting of the RAM-Coolers.
Remove all five screws.
Important: Loosen the 5 screws „cross-wise“. Follow this loosening method by turning the screws approx. a half turn each before moving to the next screw. Repeat until loose.



E – The last step is the dismounting part of the Cooler for the Voltage converter „E“.

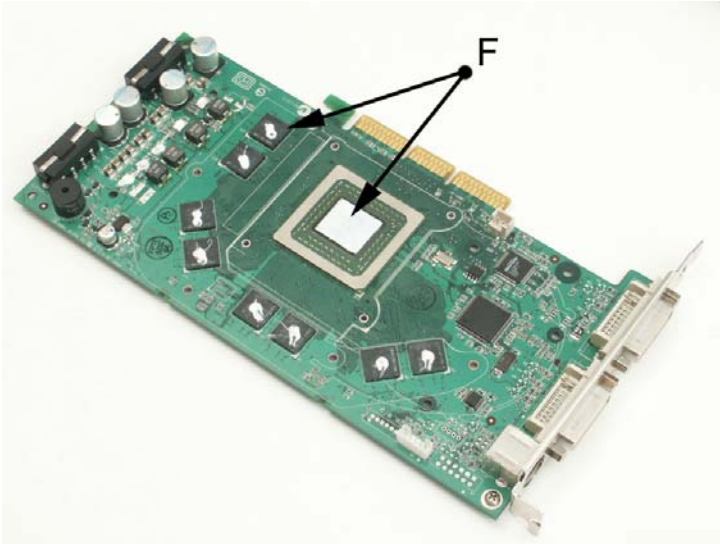
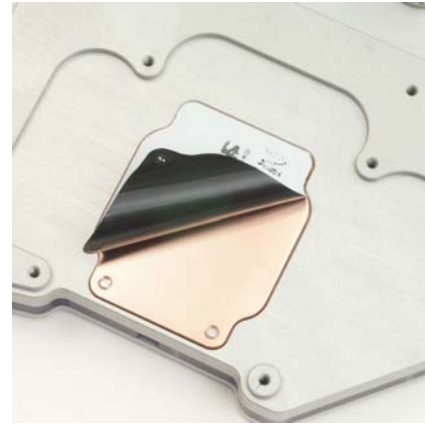
The pins that hold the Cooler can be removed by pressing the holding counter piece together.



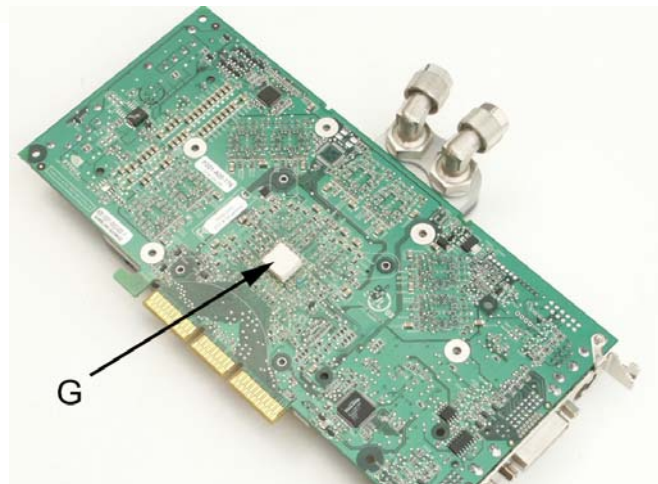
4.) Installing the Cool-Matic NV 40

Before mounting the Cooler, please remove the protective foil.

F – Afterwards put the heat conductive paste on the GPU and all RAM-Chips – see „F“. Apply evenly and thin onto the GPU. A very little “dot” in the center of the RAM-Chips is enough.



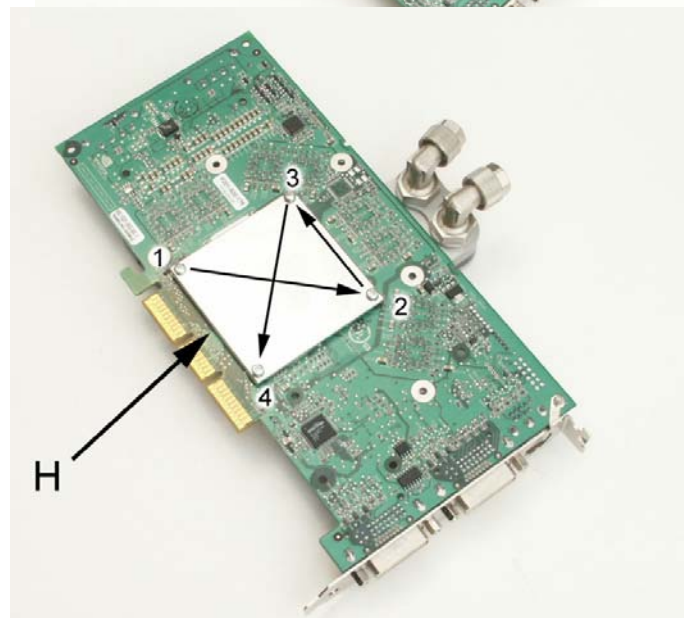
G - Please place the Graphic Card on the GPU cooler side and position the Presspad („G“) exactly over the GPU. The positioning is centered between the four screws of the Backplate. The Red side of the Pad points towards the Backplate.



H – Now to the mounting of the Backplate.
Important: Don't take off the protective foil of the Backplate !

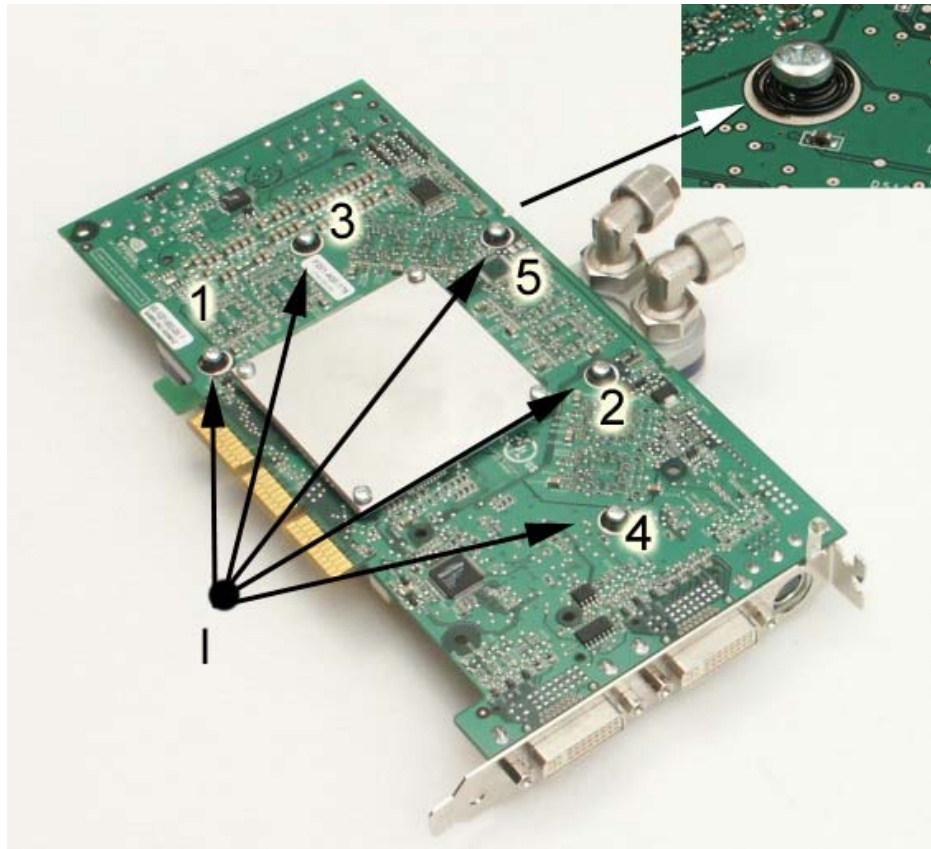
Tighten the 4 screws „cross-wise“ as indicated. Follow this tightening instruction and turn the screws approx. a half turn. The Presspad will be compressed.

Important: Only tighten the screws to the extent that no other components are touched by the Backplate.



I – Now we move to the mounting of the screws in the RMA Module area.

Tighten the screws „cross-wise“. Follow this tightening instruction and turn the screws approx. a half turn each before moving to the next. The right contact pressure is reached when the last coil of the spring barely touch.
(see small picture).

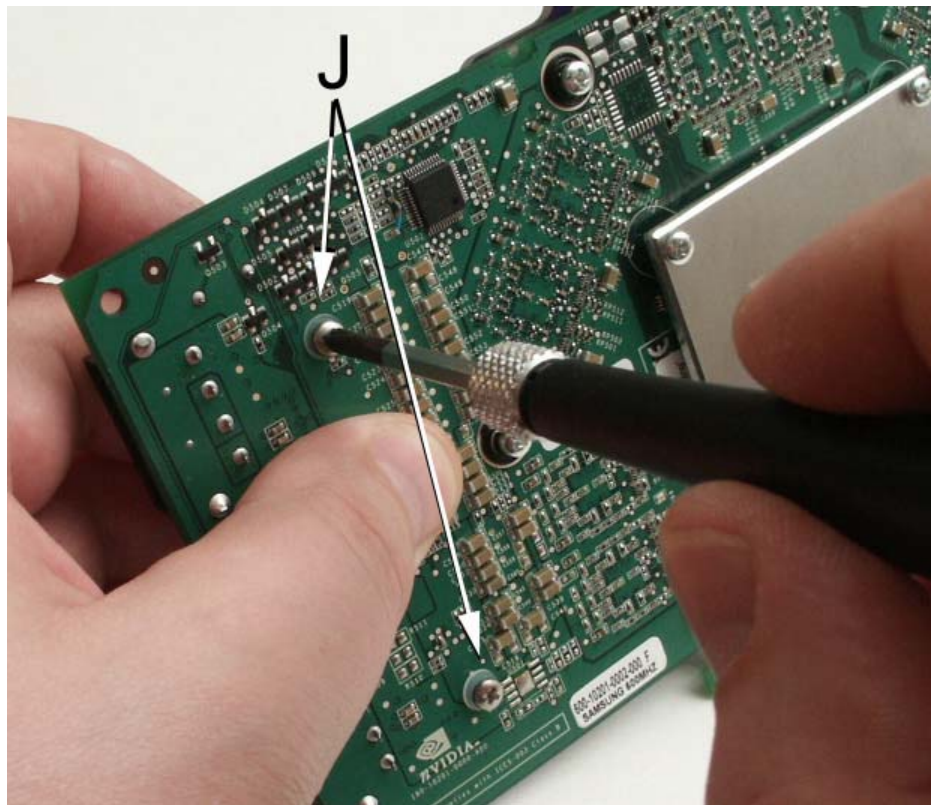


J – At the end the mounting of the screws in the Voltage Converter area.

Important: Here **great caution** needs to be applied as the Voltage Converters only withstand little pressure.

Place the card as shown in your hand and press lightly between the position „J“ the Cooler on the card. For mounting use the two short screws and the plastic washers. Only turn the screws so far in that the card does not lift from the Cooler.

EXTREMELY IMPORTANT: Both these screws only get a ¼ revolution turn. Repeat alternating till tight.



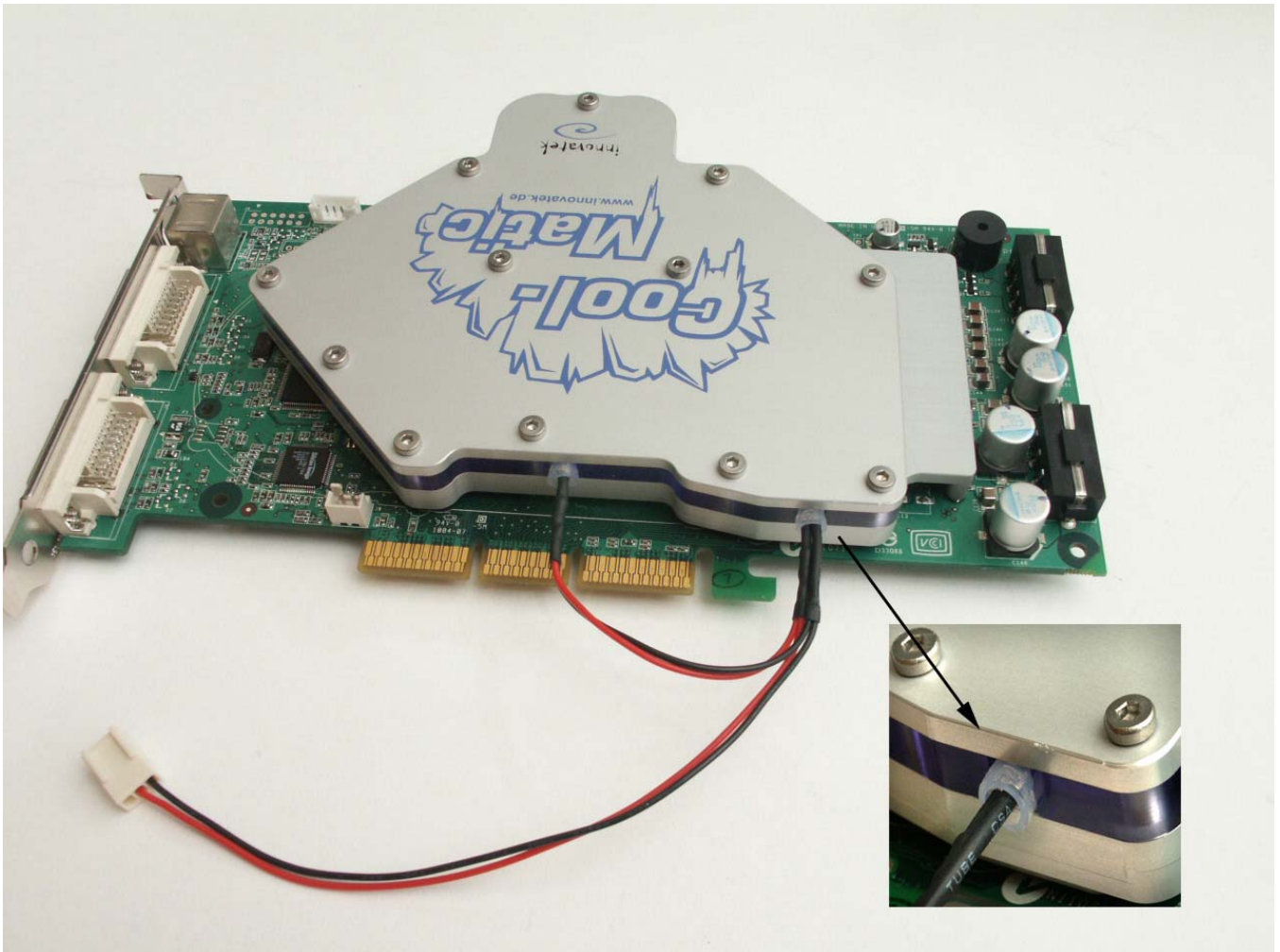
5.) General Information and proper usage

Please only use distilled water and innovatek protect (consider separate instructions for innovatek protect on the bottle!) for use with the Cooler. Examine the Cooler for leak tightness.

You can read out and display the temperatures in the display menu of the software drivers. Before the first start of a 3D-Application you should examine the correct installation of the Cooler. After installation of the tubes please pay attention that no pressure or pull forces apply to/on the Cooler. Do not open the Cooler!

6.) Extra Accessories

As optional edition you get the Cooler with a lightband. For the attachment of the LED please use the included Shells for LEDs. Place these into the intended recesses of the light band and put the LED into it. Please do not use any adhesives! The LED can be operated at any fan connection with 12V.



7.) Support

You have a question or a problem ? By questions to the Cool-Matic NV 40 Cooler please send us your email to info@innovatek.de or check our Manufacturer forum at www.innovatek.de/forum